

POPULATION AND DEMOGRAPHICS

7.3 million

residents for Houston-The Woodlands
-Sugar Land MSA

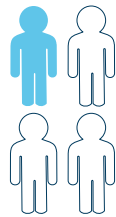
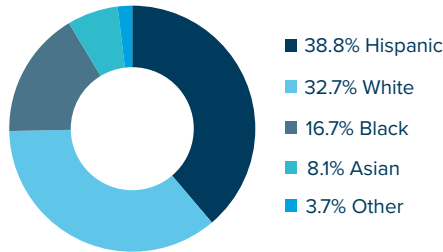
**Nation's 5th most
populous metro area**

Larger than Massachusetts or Tennessee
by population

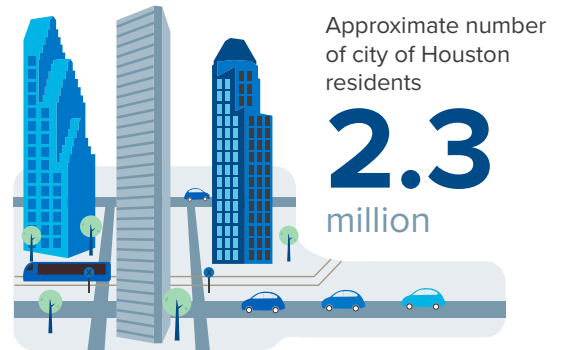


Race/Ethnicity: Houston MSA

Houston today mirrors the U.S. in 4 decades



**Nearly 1 in 4
Houstonians
are foreign born**



**Houston is the nation's
4TH most populous city**

GLOBAL PRESENCE

15 foreign
governments

maintaining trade and commercial offices

**39 Active International
Chambers of Commerce or
Trade Associations**

In '22, cargo activity at the Houston Ship
Channel

supported 1.5 million

direct, indirect, and induced jobs across the
state of Texas.

147 Houston-based
firms

operate more than 3,100 foreign subsidiaries

2 international airports

George Bush Intercontinental (IAH)
William P. Hobby Airports (HOU)

IAH ranks 7th in the nation in
number of international destinations

Houston Airport System

66 international
destinations

116 domestic
destinations

182 non-stop destinations

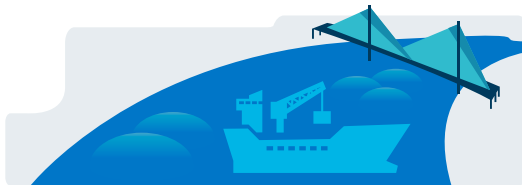
\$390.1 billion

in trade was handled by the Houston-Galveston
Customs Districts in '22

*Numbers may not sum due to rounding

\$133.7 billion in imports (in '22)

\$256.5 billion in exports (in '22)



**Houston is the
#1 exporting metro**

The Houston Ship Channel is ranked

1st

U.S. port in
foreign
waterborne
tonnage

1st

U.S. port in total
foreign and
domestic
waterborne tonnage

**Port Houston
is the busiest
Gulf Coast
container port**

**2ND U.S. port in total foreign
cargo value**

5,000+

Houston companies
doing business abroad

1,700+

Houston firms
report foreign ownership

Since '09, more than 500 foreign-owned
firms have announced

over 700 projects
in Metro Houston

88 nations

have consular representation
in Houston

**3RD largest representation
in the nation
(consular representation)**

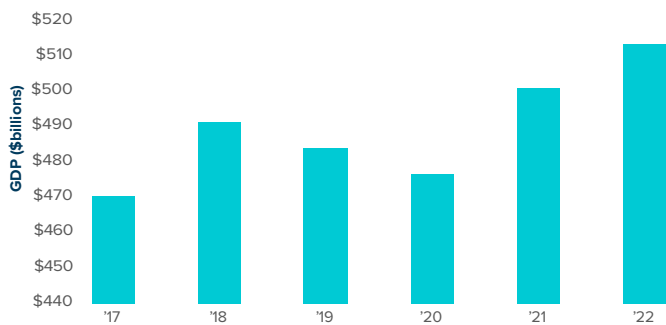
17 foreign banks

are located in Houston from 9 nations

ECONOMY

If Houston were a country, it would rank as the 25th largest economy in the world, between Poland and Argentina

Metro Houston - '17-'22 Real GDP (\$ billions '17 constant dollars)



Source: BEA CAGDP9 Real GDP by county and metropolitan area

Houston – The Woodlands – Sugarland MSA GDP has grown at a

1.7 percent
compound annual growth rate
Since '17, after adjusting for inflation

7TH
largest
U.S. metro
economy

26 Fortune 500 Companies
call Houston home

EMPLOYMENT

3.4
million

jobs in the
Houston MSA

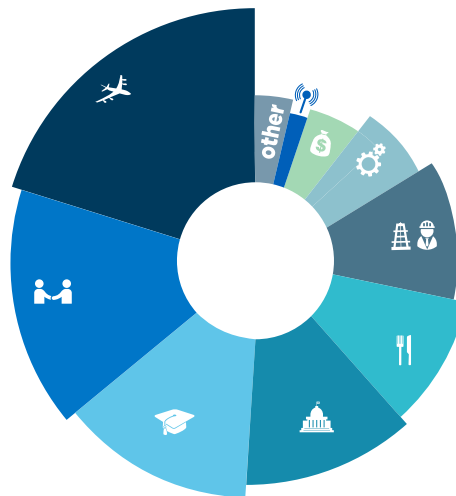


Health, Education, and
Business & Professional
Services account for over

1 in **4**
of the region's jobs

The goods-producing
sector accounts for nearly

1 in **6**
of the region's jobs



Industry Share of Houston MSA Employment

- 21.0%** Trade, Transportation, and Utilities
- 16.5%** Professional and Business Services
- 13.6%** Educational and Health Services
- 13.4%** Government
- 10.1%** Leisure and Hospitality
- 8.5%** Mining, Logging and Construction
- 6.9%** Manufacturing
- 3.4%** Finance and Insurance
- 1.0%** Information
- 3.5%** Other Services

Source:
Texas Workforce Commission, December '23,
not seasonally adjusted

INDUSTRIES

The Texas Medical Center is
the world's largest medical complex.

TMC employs **120,000+** workers



\$3 billion
in construction
projects underway

50 million
developed square feet

10 million
annual patient encounters

180,000+
annual surgeries

Houston is home to **70,450**
engineers and architects and related techs.



Approximately **230,000**

people work in the region's manufacturing industry sector

Houston has more than
500 
aviation and aerospace-related
companies

Houston is home to
9,100 
tech-related firms, including more
than 1,000 venture-backed startups



Houston employs **81,830** workers in
computer & mathematical occupations