

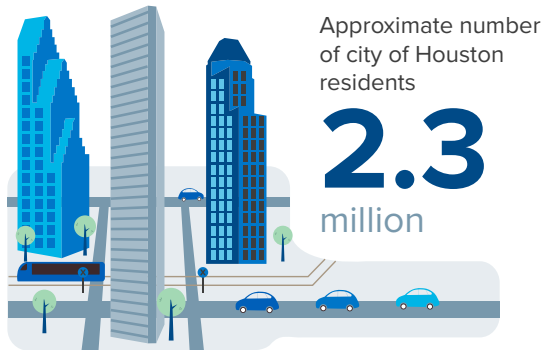
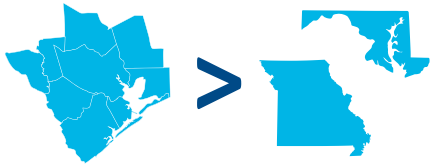
## POPULATION AND DEMOGRAPHICS

**7.0** million

residents in the 9-county  
Houston-The Woodlands-Sugar Land MSA

**Nation's 5<sup>th</sup> most  
populous metro area**

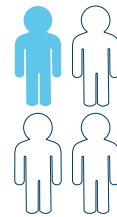
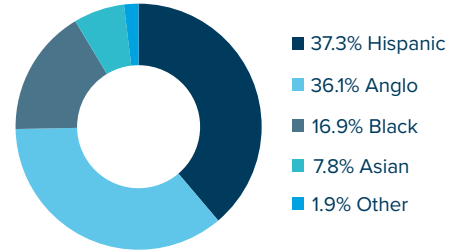
Larger than Missouri or Maryland



**Houston is the nation's  
4<sup>TH</sup> most populous city**

### Race/Ethnicity: Houston MSA

Houston today mirrors the U.S. in 4 decades



**Nearly 1 in 4  
Houstonians  
are foreign born**

## GLOBAL PRESENCE

**15** foreign  
governments

maintain trade and commercial offices  
in Houston

**35 active foreign  
chambers of commerce**

**17.3%**  
of the region's  
economy is  
tied to exports

exports  
support  
330,000  
jobs

**58.3** million

Houston airport passengers in '18

global travelers **11.8** million  
domestic travelers **46.5** million

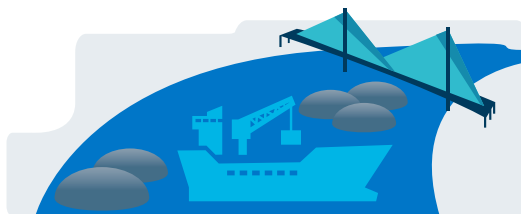
**189 nonstop destinations**

**\$233.3** billion

in trade was handled by the  
Houston-Galveston Customs Districts in '18

**\$140.5** billion  
in imports (in '18)

**\$92.7** billion  
in exports (in '18)



**Houston has the largest  
export market in the U.S.**

### Port Houston ranks

**1<sup>st</sup>**  
in foreign  
tonnage for  
22 straight  
years

**Largest**  
Gulf Coast  
container port

**2<sup>nd</sup>**  
in total tonnage  
for 26 straight  
years

**5,000+**

Houston companies  
doing business abroad

**1,700+**

Houston establishments  
report foreign ownership

**90** nations

have consular representation  
in Houston

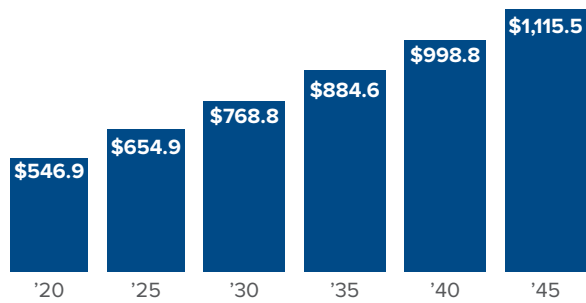
**3<sup>RD</sup> largest representation  
in the nation**

**19** foreign banks

are located in Houston from 10 nations

## ECONOMY

If Houston were an independent nation, the region would have the 26th largest economy in the world, behind Belgium and ahead of Thailand.



Houston - The Woodlands - Sugarland MSA  
GDP forecast (\$ billions '09 constant dollars)  
Source: Perryman Group

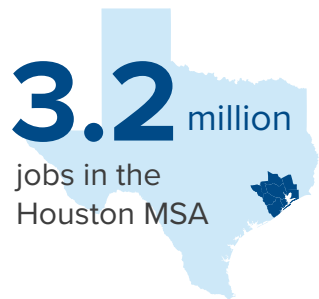
**2.9**  
percent  
expected real GDP  
annual growth from '20 - '45

GDP expected to more than  
double between '20 and '45



**22** Fortune 500 Companies call Houston home

## EMPLOYMENT



more jobs  
than 35  
states

Service industries  
account for

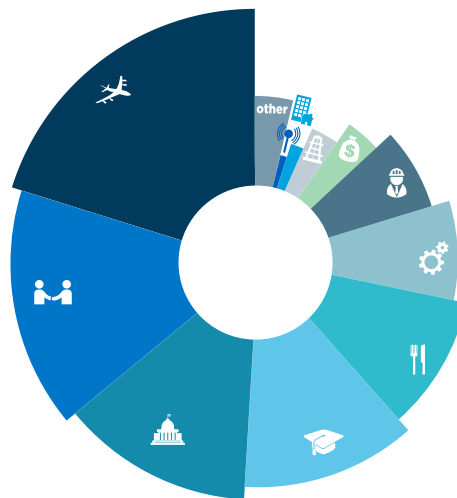
**4** out of **5**

workers in the region

The goods-producing  
sector accounts for nearly

**1** in **5**

of the region's jobs



### Industry Share of Houston MSA Employment

- 20% Trade, Transportation, and Utilities
- 16% Professional and Business Services
- 13% Government
- 13% Educational and Health Services
- 11% Leisure and Hospitality
- 7% Manufacturing
- 7% Construction
- 3% Finance and Insurance
- 3% Mining and Logging (Upstream Energy)
- 2% Real Estate and Rental and Leasing
- 1% Information
- 4% Other Services

Source: Texas Workforce Commission

## INDUSTRIES

The Texas Medical Center is  
the world's largest medical complex.



**\$3** billion  
in construction  
projects underway

**50** million  
developed square feet

Houston is home to 83,100 engineers and  
architects.



Approximately **225,000**  
people work in the region's manufacturing industry

**44**

of the 128 publicly-traded oil  
and gas exploration firms  
are housed in Houston

**650** | **800**

exploration and  
production firms | oil field service  
companies

located in the Houston region

**10** million  
annual patient visits

**180,000+**  
annual surgeries



Houston employs **25%** of the  
nation's oil and gas extraction jobs