

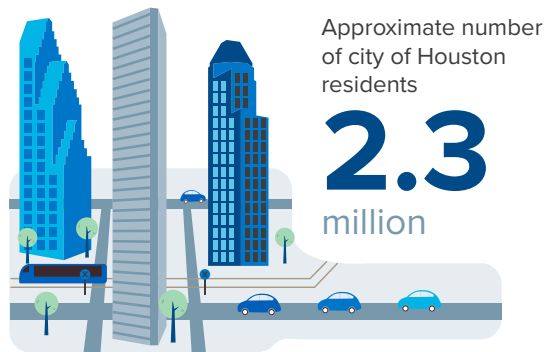
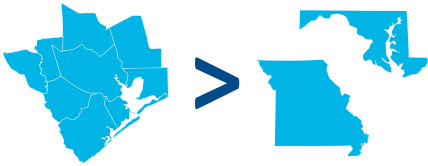
POPULATION AND DEMOGRAPHICS

7.0 million

residents in the 9-county
Houston-The Woodlands-Sugar Land MSA

**Nation's 5th most
populous metro area**

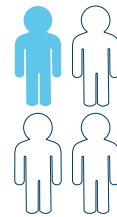
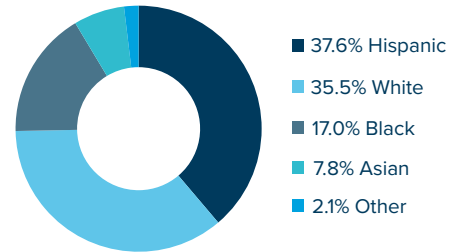
Larger than Missouri or Maryland



**Houston is the nation's
4TH most populous city**

Race/Ethnicity: Houston MSA

Houston today mirrors the U.S. in 4 decades



**Nearly 1 in 4
Houstonians
are foreign born**

GLOBAL PRESENCE

15 foreign
governments

maintain trade and commercial offices
in Houston

**35 active foreign
chambers of commerce**

17.3%
of the region's
economy is
tied to exports

exports
support
**330,000
jobs**

58.3 million

Houston airport passengers in '18

global travelers **11.8** million domestic travelers **46.5** million

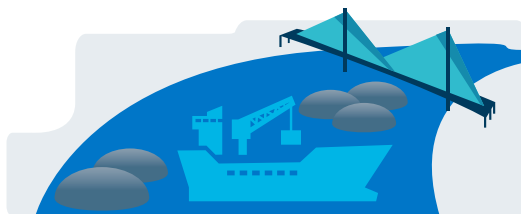
189 nonstop destinations

\$233.3 billion

in trade was handled by the
Houston-Galveston Customs Districts in '18

\$140.5 billion in imports (in '18)

\$92.7 billion in exports (in '18)



**Houston has the largest
export market in the U.S.**

Port Houston ranks

1st

in foreign
tonnage for
22 straight
years

Largest

Gulf Coast
container port

2nd

in total tonnage
for 26 straight
years

5,000+

Houston companies
doing business abroad

1,700+

Houston establishments
report foreign ownership

90 nations

have consular representation
in Houston

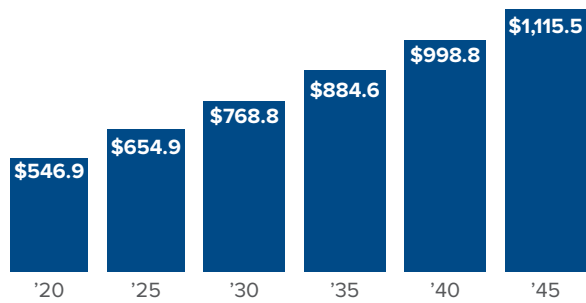
**3RD largest representation
in the nation**

19 foreign banks

are located in Houston from 10 nations

ECONOMY

If Houston were an independent nation, the region would have the 26th largest economy in the world, behind Belgium and ahead of Thailand.



Houston - The Woodlands - Sugarland MSA
GDP forecast (\$ billions '09 constant dollars)
Source: Perryman Group

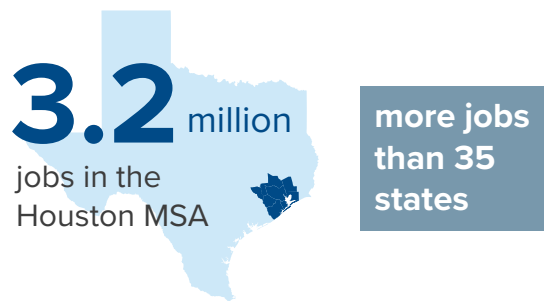
2.9
percent
expected real GDP
annual growth from '20 - '45

GDP expected to more than
double between '20 and '45



22 Fortune 500 Companies call Houston home

EMPLOYMENT

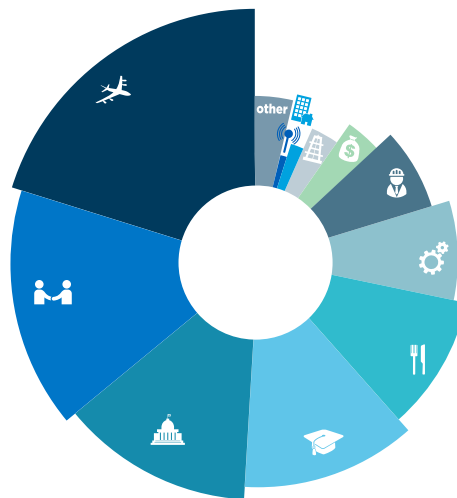


Service industries
account for

4 out of **5**
workers in the region

The goods-producing
sector accounts for nearly

1 in **5**
of the region's jobs



Industry Share of Houston MSA Employment

- 20% Trade, Transportation, and Utilities
- 16% Professional and Business Services
- 13% Government
- 13% Educational and Health Services
- 11% Leisure and Hospitality
- 7% Manufacturing
- 7% Construction
- 3% Finance and Insurance
- 3% Mining and Logging (Upstream Energy)
- 2% Real Estate and Rental and Leasing
- 1% Information
- 4% Other Services

Source: Texas Workforce Commission

INDUSTRIES

The Texas Medical Center is
the world's largest medical complex.



10 million
annual patient visits

180,000+
annual surgeries

Houston is home to 83,100 engineers and
architects.



Approximately **225,000**
people work in the region's manufacturing industry

44
of the 128 publicly-traded oil
and gas exploration firms
are housed in Houston

650 | **800**
exploration and
production firms | oil field service
companies
[located in the Houston region](#)



Houston employs **25%** of the
nation's oil and gas extraction jobs